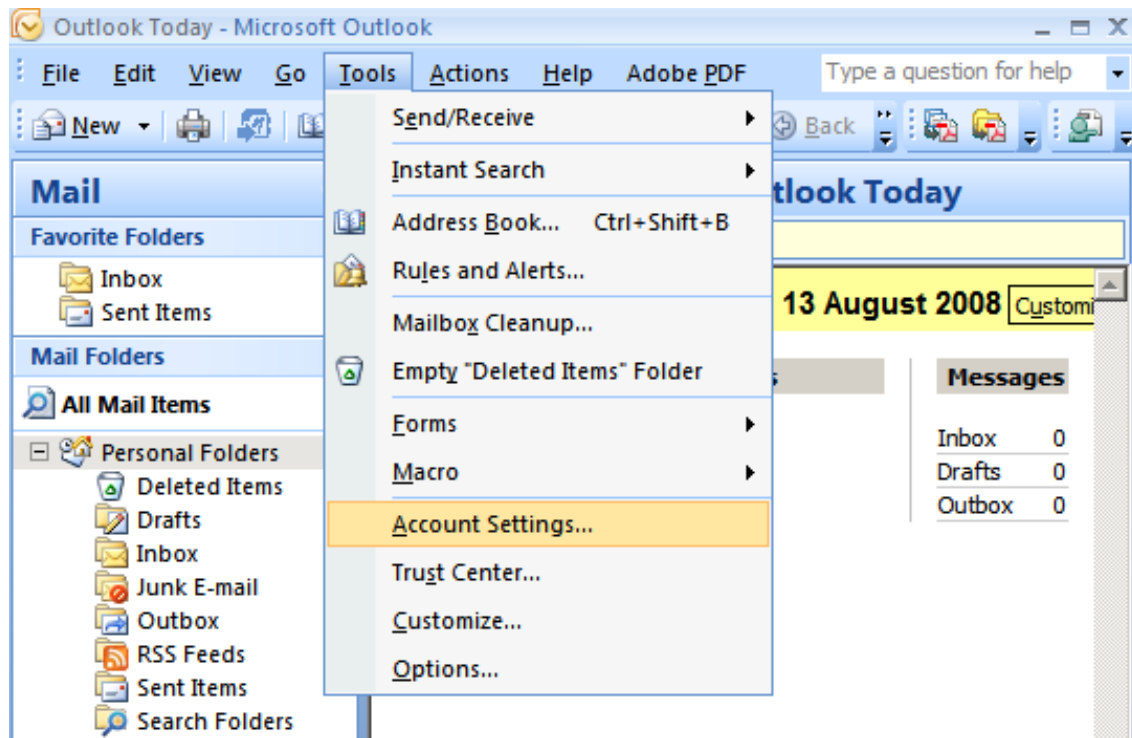
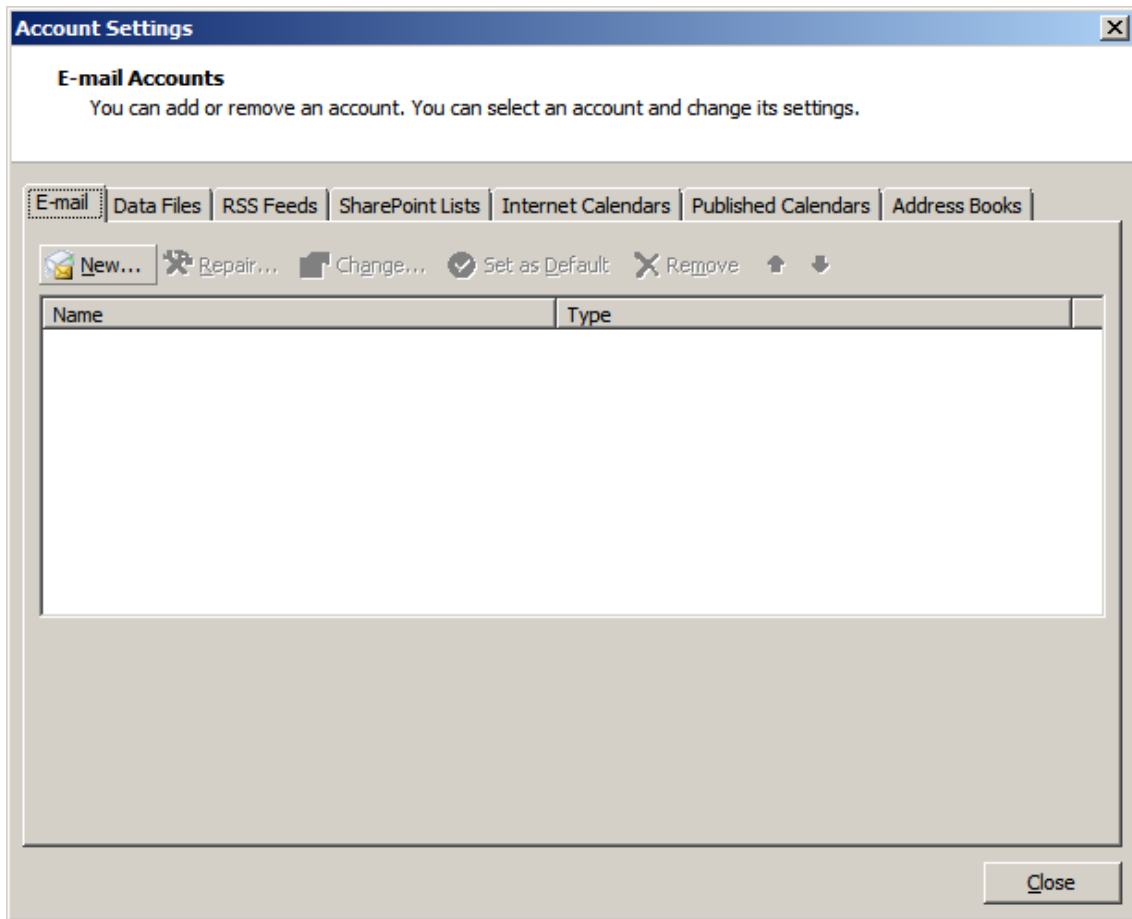


Basic settings for using Outlook 2007 with IServe POP accounts



New



Add New E-mail Account [X]

Auto Account Setup [Help Icon]

Your Name:
Example: Barbara Sankovic

E-mail Address:
Example: barbara@contoso.com

Password:

Retype Password:
Type the password your Internet service provider has given you.

Manually configure server settings or additional server types

< Back Next > Cancel

Add New E-mail Account [X]

Choose E-mail Service [Help Icon]

Internet E-mail
Connect to your POP, IMAP, or HTTP server to send and receive e-mail messages.

Microsoft Exchange
Connect to Microsoft Exchange for access to your e-mail, calendar, contacts, faxes and voice mail.

Other
Connect to a server type shown below.

< Back Next > Cancel

Add New E-mail Account

Internet E-mail Settings
Each of these settings are required to get your e-mail account working.

User Information

Your Name:

E-mail Address:

Server Information

Account Type:

Incoming mail server:

Outgoing mail server (SMTP):

Logon Information

User Name:

Password:

Remember password

Require logon using Secure Password Authentication (SPA)

Test Account Settings

After filling out the information on this screen, we recommend you test your account by clicking the button below. (Requires network connection)

Enter whatever you wish people to see in "Your Name"

Then your email address

Enter pop3.iserve.net.nz for the incoming mail server

Enter the SMTP address for whichever Internet service provider you use.

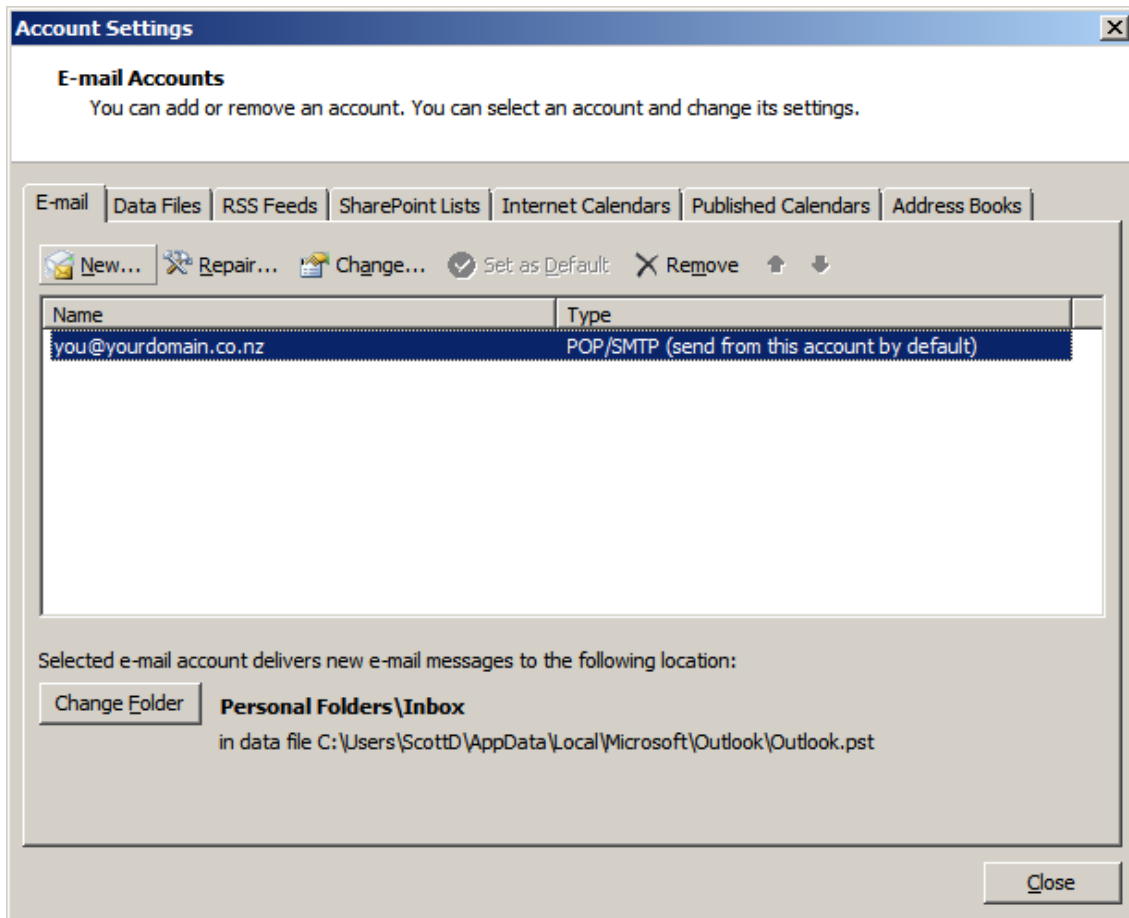
EG something like one of the following

- smtp.xtra.co.nz
- smtp.paradise.net.nz
- smtp.clear.net.nz
- smtp.ihug.co.nz
- etc

Enter the Mailbox name and password provided

You can also access your emails online via the IServe Webmail interface

<https://console.iserve.net.nz/webmail/>



Follow the instructions below to setup Microsoft Outlook Express to check E-Mail from a POP Mailbox. Other E-Mail programs will be the same in principle.

1. Open Outlook Express
2. Click Tools on the toolbar and then click Accounts
3. Click on Add to add a new mail account
4. Type the name you wish to appear on the e-mails you send
Click Next to continue
5. Enter your E-Mail address. eg: youraddress@yourdomainname.co.nz
Click Next to continue

6. My incoming mail server is a should be set to POP3
Incoming mail should be set to: pop3.iserve.net.nz
Outgoing mail should be set to: [whatever your current ISP uses]*

* if you use Xtra to connect to the internet, then set outgoing mail to: smtp.xtra.co.nz
if you use Paradise.net to connect to the internet then use: smtp.paradise.net.nz/
If you are unsure, then call your ISP and ask them for the name of their outgoing mail server.

Click Next to continue

7. Type your Mailbox Name in the Account Name field
Type your Mailbox Password in the Password field
Click Next to continue

Click Finish

Your E-Mail configuration is now complete.